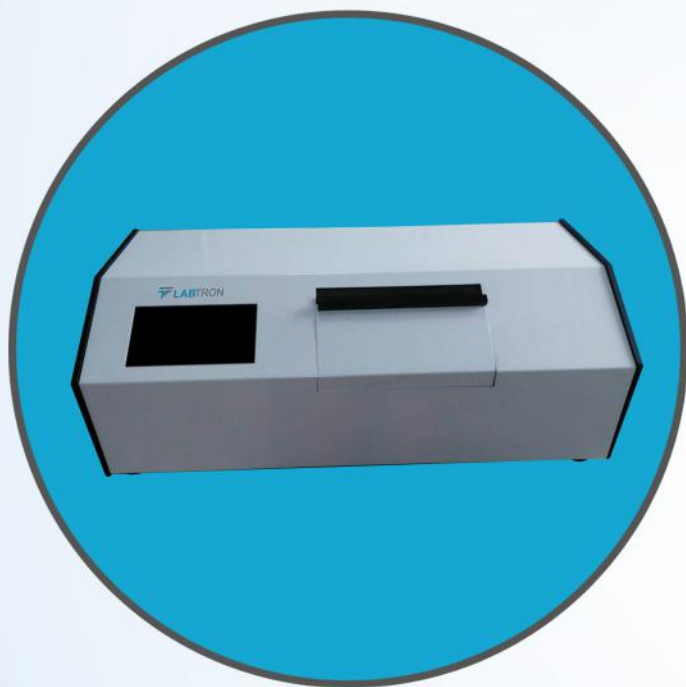


Manual Polarimeter

LPMR-B1 Series



www.labtron.com

info@labtron.com

Manual Polarimeter LPMR-B1 Series

Manual Polarimeter LPMR-B10 with LED display, has $\pm 45^\circ$ scope of measurement. Equipped with optical rotation, it determines concentration, content, purity of a substance. Long-life LED with 589 nm filter works as light source.

Manual Polarimeter LPMR-B11 with LED display, is upgraded to $\pm 89.99^\circ$ scope of measurement. With four types of optical measurements, it determines concentration, content, purity and sugar concentration of a substance. Long-life LED with 589 nm filter works as light source.

Manual Polarimeter LPMR-B12 with 7 inch TFT touch screen display is upgraded to $\pm 89.99^\circ$ and $\pm 259^\circ Z$ scope of measurement. With four types of optical measurements, it determines concentration, content, purity and sugar concentration of a substance. Long-life LED with 589 nm filter works as light source.

Features

LPMR-B10, LPMR-B11

- Manual calibration mode
- $\pm 45^\circ$ scope of measurement- LPMR-B10
- $\pm 89.99^\circ$ scope of measurement- LPMR-B11
- LED screen display
- Automatic photoelectric detection technology
- Accurate and precise measurement
- User-friendly operations

LPMR-B12

- Manual calibration mode
- $\pm 89.99^\circ$, $\pm 259^\circ Z$ scope of measurement
- 7 inches TFT touch screen display
- Equipped with built-in Parr (peltier) temperature control system
- Automatic photoelectric detection technology
- Accurate and precise measurement
- User-friendly operations

Applications

Used in pharmacy, drug and sugar testing, chemical, dye and paint industry, oil and cosmetics industry, food and spices,. Also used in laboratory, research institutes of biotechnology, microbiology, and other fields.

Specifications

Model no.	LPMR-B10	LPMR-B11	LPMR-B12
Measurement Mode	Optical rotation	Optical rotation, specific rotation, concentration and international sugar content	
Calibration Mode	Manual Calibration		
Measuring Range	±45.0°	±89.99°	±89.99°, ±259°Z
Minimum Reading	0.01°(optical rotation)	0.001°(optical rotation)	
Accuracy	±0.01°(-45° ≤ optical rotation ≤ +45°)		
Repeatability (standard deviations)	0.02°(optical rotation)	0.002°(optical rotation)	
Measurable sample min. transmittance	1%		
Light source	LED		
Working wavelength	589.3 nm		
Test tube	One 200 mm tube & One 100 mm tube		
Temperature control mode	-	-	Built-in semiconductor
Temperature control range	-	-	15 to 35 °C
Temperature control accuracy	-	-	± 0.2°C
Display	LED screen		7 inch TFT touch screen
Data storage capacity	3 groups	1000 groups	
Interface	USB, RS232		
Power supply	220 W	250 W	
Power	AC 220V ± 10% 50 Hz		
Dimension	600 × 320 × 220 mm	600 × 320 × 220 mm	780 × 420 × 400 mm
Net weight	20 kg		24 kg
Gross weight	25 kg		28 kg
HS Code	9027300000		